

# CE CASHMERE ESTATE



## RIDGELINE

STUNNING ELEVATED SECTIONS NOW RELEASED



*Artistic interpretation, not to scale.*

#### FOR MORE INFORMATION:

Phone Chris: 027 730 4050

Website: [www.cashmereestate.co.nz](http://www.cashmereestate.co.nz)

Email: [sales@cashmereestate.co.nz](mailto:sales@cashmereestate.co.nz)

Facebook: Cashmere Estate

#### VISIT CASHMERE ESTATE:

Corner of McVicar Drive & Worsleys Road, Christchurch City



RIDGELINE



“Elevate your perspective”

Commanding views from Christchurch’s skyline to the Southern Alps & Kaikoura Ranges.

Introducing Ridgeline, the premium pinnacle of Cashmere Estate, where elevated living becomes a reality. Positioned atop the estate’s highest ground, this exclusive release of Stage 5 will encompass spectacular panoramic views and the height of living.

*Live without compromise...*

# RIDGELINE | STAGE 5

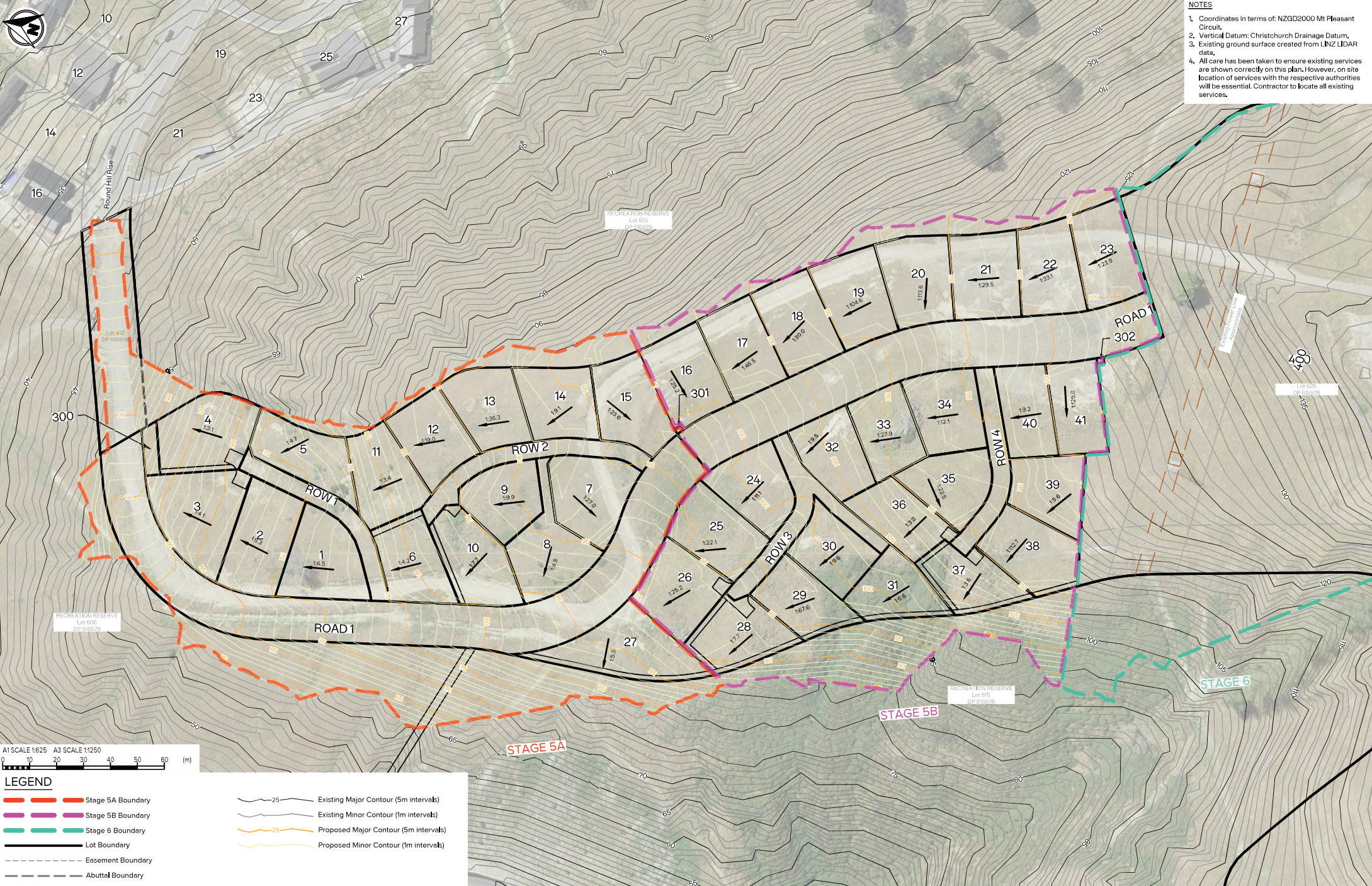
Ridgeline offers select sections commanding uninterrupted views, from the dramatic peaks of the Southern Alps to the distant Kaikoura Ranges, embracing Christchurch city's skyline in between.

Cashmere Estate carves a rare niche in Christchurch's landscape, a coveted development where the expansive serenity of the countryside meets the dynamic conveniences of the modern, ever-evolving city.

An environment of cultivated natural beauty, Cashmere Estate offers families spacious, sunlit sections framed by native bush and the stunning Port Hills, with lush greenery, walking trails, bike paths, and a generous community green inviting exploration.

Discover Ridgeline, the crowning chapter in Cashmere Estate's story, offering a truly elevated perspective. Each section promises not only a view but a vantage point, a rare opportunity to live above it all, surrounded by the elements that inspire. All within a convenient 12-minute drive of Christchurch's thriving CBD.





- NOTES**
- Coordinates in terms of NZGD2000 Mt Pleasant Circuit.
  - Vertical Datum: Christchurch Drainage Datum.
  - Existing ground surface created from LINZ LIDAR data.
  - All care has been taken to ensure existing services are shown correctly on this plan. However, on site location of services with the respective authorities will be essential. Contractor to locate all existing services.

A1 SCALE 1:625 A3 SCALE 1:1250  
 0 10 20 30 40 50 60 (m)

**LEGEND**

	Stage 5A Boundary		Existing Major Contour (5m intervals)
	Stage 5B Boundary		Existing Minor Contour (1m intervals)
	Stage 6 Boundary		Proposed Major Contour (5m intervals)
	Lot Boundary		Proposed Minor Contour (1m intervals)
	Easement Boundary		
	Abuttal Boundary		

Rev'l	Description	Drawn	Date
1		JC	17.09.24
D	UPDATE DESIGN	JC	09.10.24
C	UPDATE CONTOURS	JC	17.09.24
B	CHANGE CONTOUR INTERVAL	JC	16.07.24
A	PRELIMINARY ISSUE	JC	01.05.24

**INOVO**  
 Level 1, 93 Manchester St, Christchurch 8022  
 Ph. 03 377 3290  
 Level 1, Shed 19, Princess Wharf, Auckland 1010  
 Ph. 09 600 1099  
 www.inovo.nz

Disclaimer: This document shall only be reproduced in full with approval from Inovo Projects Ltd.

Scale A1  
1:625  
 Scale A3  
1:1250  
 DO NOT SCALE FROM DRAWING

Drawn  
JC  
 Approved  
MG  
 Date  
01.05.2024

Client  
**CASHMERE LAND DEVELOPMENTS LTD**

Project  
**CASHMERE ESTATE STAGE 5**

Drawing Title  
**PROPOSED EARTHWORKS CONTOURS PLAN**

# GALLERY | CASHMERE ESTATE

---





**STAGE 1**

Worsleys Road

Long Acre Dr

**STAGE 2B & C**

**STAGE 2A**

McVicar Drive

Round Hill Rise

**STAGE 4**

McVicar Drive

Worsleys Road

Steve Askin Drive

Carex Rise

**STAGE 3A**

**STAGE 5**

**STAGE 2D**

**STAGE 3B**

CASHMERE ESTATE | STAGES

# FOR MORE INFORMATION

---

## CONTACT US:

**Phone Chris:** 027 730 4050

**Email:** [sales@cashmereestate.co.nz](mailto:sales@cashmereestate.co.nz)

---

## VISIT CASHMERE ESTATE:

### SALES OFFICE:

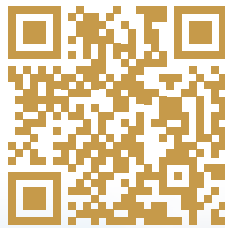
Corner of McVicar Drive & Worsleys Road

Christchurch City

---

## VISIT OUR WEBSITE:

[www.cashmereestate.co.nz](http://www.cashmereestate.co.nz)



---

LIVE WITHOUT COMPROMISE

---